

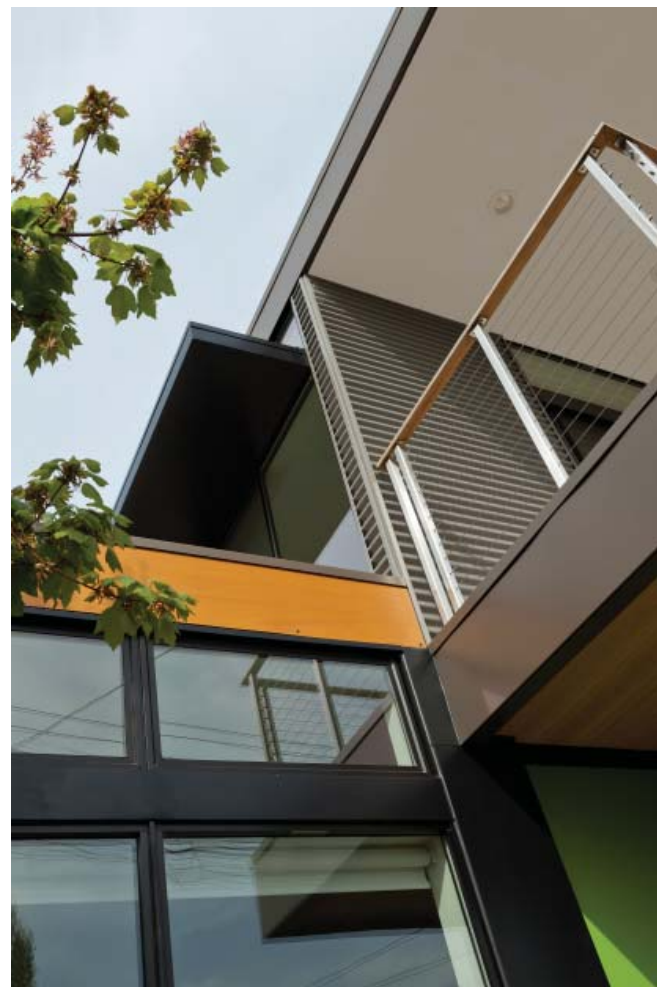
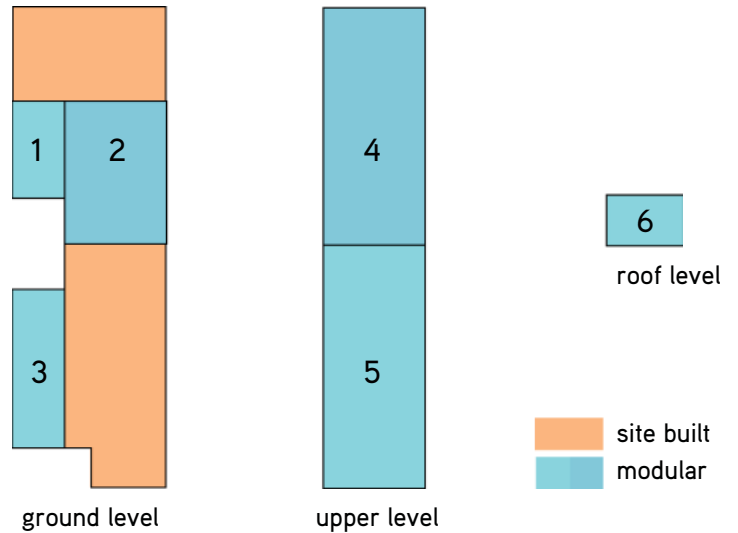


SWATT MIERS

SIMPATICO 2-STORY HOUSE

The Simpatico 2-Story House is the first in the Swatt Miers series, and is designed to fit on a variety of lots, including narrow, urban infill lots. The home is designed to be net zero, with photovoltaic panels on the roof. The home includes two bedrooms, three baths, a home office, a great room, and an extra study/sleeping loft.

Varied ceiling heights, coupled with a unique plan that incorporates a secondary entrance/courtyard, give this home a degree of customization not often associated with prefabricated housing. The modules are a 'kit of parts,' allowing for limitless unique designs within the system to suit the needs of the client and the demands of the site.





SWATT MIERS ARCHITECTURE

SIMPATICO 2-STORY HOUSE

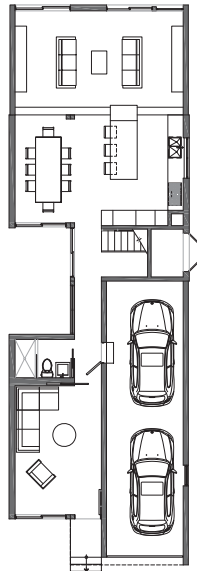
6 MODS

2 bed, great room, home office, study/sleeping loft, 3 bath, roof deck
2140 sqft
+2 car tandem garage

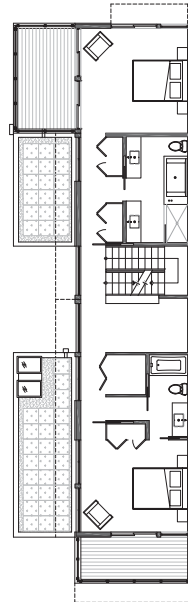
PRICING:

Modular Cost: starting at \$520,000
Modular + Site: starting at \$850,000*

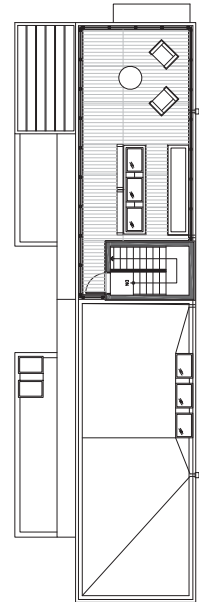
The 6 MOD Simpatico 2-Story House consists of 3 factory-built modules on the ground level with a site-built garage and sunken site-built family room. The upper level is made up of 2 factory-built modules, with decks off of each bedroom and the option of green roofs. The roof level has a stair tower module, a roof deck, and area for photovoltaics.



ground level



upper level



roof level

*Site costs vary by region and lot characteristics. Additional costs for transportation, permits, utility connections and sales tax are not included and are determined during feasibility.

